

# Optical Fibre Ducting Raceway

## YELLOWDUCT.COM

**Solutions, Products & Accessories**



## Contents

<b>Straight Duct</b>	<b>10</b>
<b>Joiners</b>	<b>11</b>
<b>Tees, Elbows &amp; Crosses</b>	<b>12</b>
<b>Breakouts</b>	<b>14</b>
<b>Express Outlets</b>	<b>16</b>
<b>Drop-off solutions</b>	<b>17</b>
<b>Reducers</b>	<b>20</b>
<b>Fibre Storage Loops</b>	<b>21</b>
<b>End Caps</b>	<b>22</b>
<b>Tubing</b>	<b>23</b>
<b>Adaptors</b>	<b>24</b>
<b>Retainer Clips</b>	<b>24</b>
<b>Mounting Solutions</b>	<b>25</b>
<b>Tooling Components</b>	<b>30</b>

# YellowDuct®: The Ultimate Fibre Optic Ducting Raceway System

Optical fibre patch cords are crucial for transmitting vast amounts of critical data in communications networks.

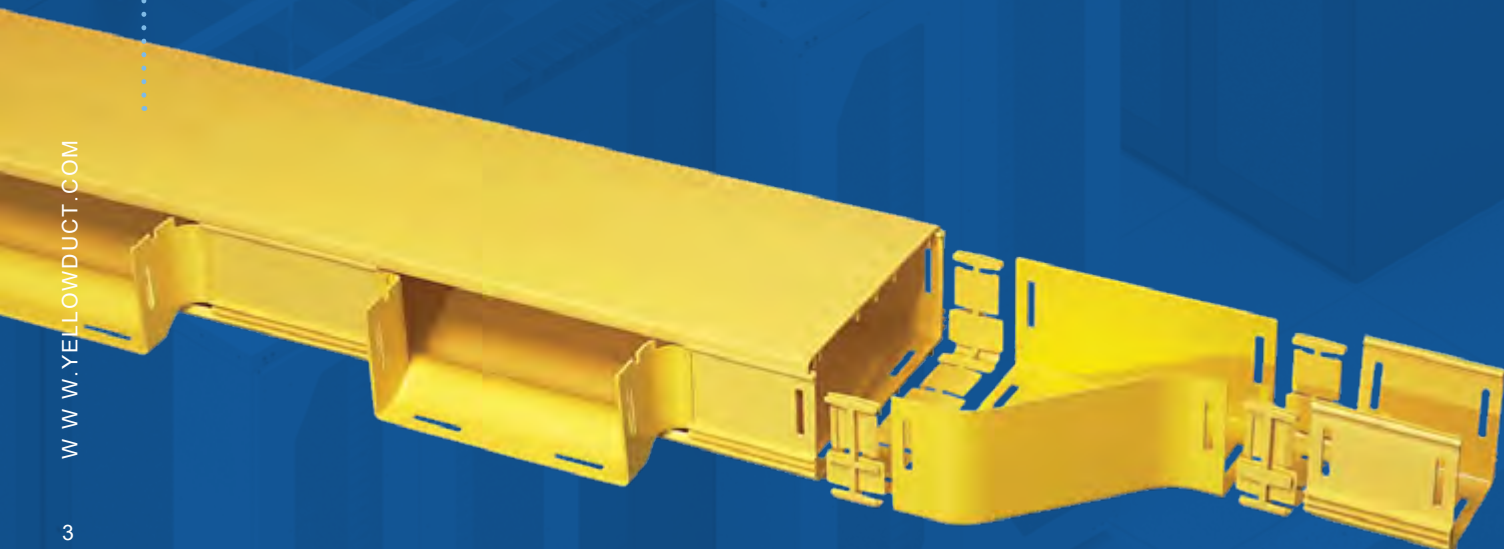
To maintain network reliability, these delicate cables - ranging from 1.6mm to 3mm in diameter - must be safeguarded from heavy electrical and copper data cabling. Traditional routing methods, such as cable trays and baskets, can damage fibre cords and compromise bend radii, leading to costly network downtime. An optical fibre ducting raceway, like YellowDuct®, prevents these issues and ensures the safety and integrity of your network.

The YellowDuct® system stands out with its pre-slotted, fully recyclable components and unique slotless joiners that require no additional tools for installation. This innovative design simplifies deployment while providing precise protection and management for fibre optic cables. Combining cutting-edge technology with unparalleled functionality, YellowDuct® enhances both sustainability and infrastructure efficiency.

Our dual joiner option are a key differentiator in the industry. Each component is pre-slotted for effortless assembly and exceptional precision, offering a level of innovation and convenience that sets YellowDuct® apart from competitors.

## Ducting Raceway items, conform to the following standards and requirements:

- **100% HALOGEN FREE**
- ISO 9001 Certified Quality Management System by BSI
- Fire retardant plastic, Halogen Free, for 100, 220 and 300mm ducting the rating is UL94V-0, for 30 and 50mm ducting the rating is UL94V-1
- UL2024A standard
- EEU - ROHS requirements
- GR-63 Core Earthquake test compliance



# Which ducting raceway suit your needs?

**The ducting system is available in two colours and six sizes, with options for either solid or slotted walls to accommodate fibre exits.**

Selecting the appropriate size is crucial for allowing for future expansion and additions. Our latest addition, the 600 x 100 ducting raceway system, offers maximum capacity, accommodating up to 7,500 2mm patch cords at a 50% fill rate. The raceway system is fully customisable, ensuring it can be tailored to meet the specific needs of your facility.

The capacities listed below are based on half full duct capacity (50%) and are recommended to ensure no damage occurs to the cords due to crushing. This is not the total number of optical fibre cords that can be accommodated if completely filled.

With over 400 individual components and mounting hardware readily available in local stock and at selected locations across Europe and Asia, our product range is constantly expanding. Proudly made in Australia, we ensure quick order turnaround times-days, not months.

Our future-proof ducting raceway solution is backed by a dedicated local R&D team, advanced network design capabilities, and ongoing product support and training. Warren & Brown also offers a comprehensive suite of services, complimentary design and layout services, BOM creation, site visits, and expert technical guidance.

## Capacities

BASED ON 2MM Ø CORD

DUCT SIZE	50 X 50 2" X 2"	100 X 50 4" X 2"	100 X 100 4" X 4"	220 X 100 8" X 4"	300 X 100 12" X 4"	600 X 100 24" X 4"
Straight ducting raceway	280	560	1110	2450	3340	6680
Ducting raceway with ramp-off			670	1470		
Vertical tee - straight through			1110	980		
Vertical tee downspout - drop			1110	110		
Over the top outlet			670			

CONVULUTED TUBING	Split 20mm Ø	38mm Ø	50mm Ø	75mm Ø	50x50 square
OPTICAL CABLE SIZE/MM	2	2	2	2	2
TUBING CAPACITY	22	125	220	360	280

Note: Calculations are based on half full duct capacity - 50%



# Planning and designing a layout and Installation

**We are here to assist you in your planning and design of a ducting layout / Installation.**

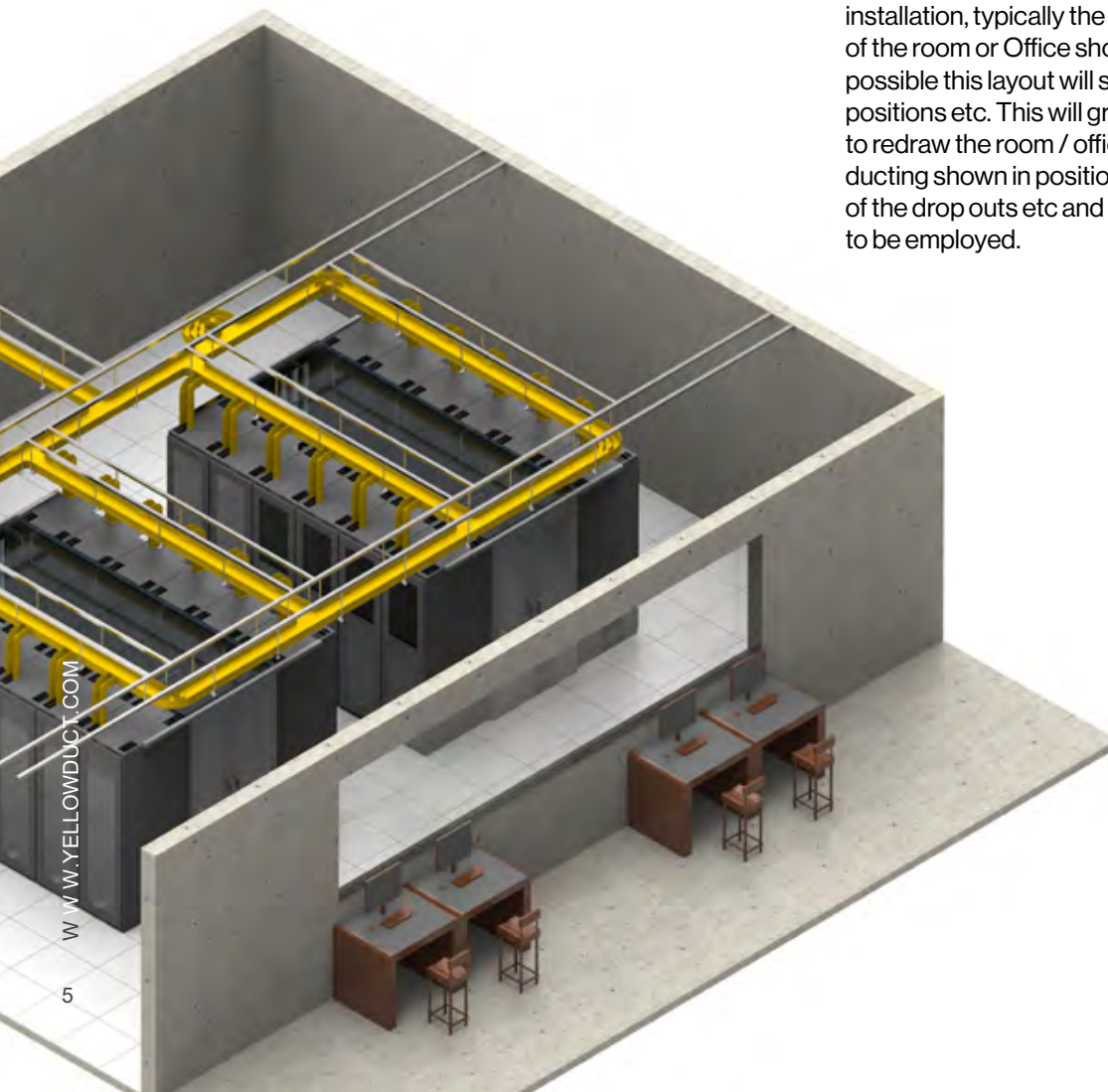
Typically we are able to produce a detailed layout drawing and complete BOM ( Bill of material ) to complete the task at hand. Below are some examples of the work we do to help you design and build the best ducting layout not only for today but where possible to allow for future expansion.

Please consider the future when planning your install, it is much easier to plan ahead than it is to retrofit ducting to existing " live" ducting infrastructure. To assist WBT in ensuring you achieve the desired results we will usually ask for additional information to ascertain the correct items required.

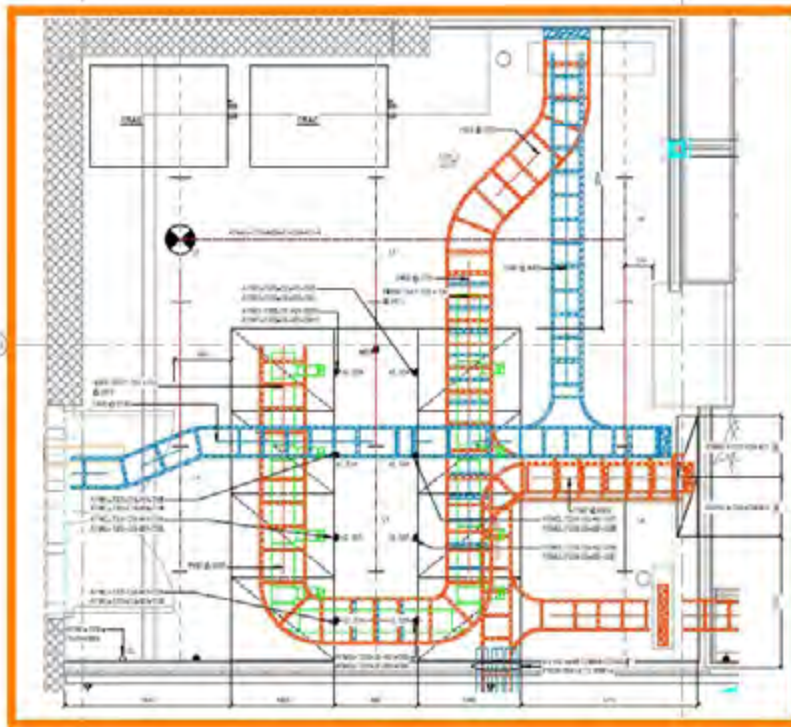
Some of these questions are listed below:

- Duct size ( remember plan for the future ) perhaps larger duct for backbone?
- Drop off Type? Size? Are tubes required? Running duct to rack entry points?  
How many fibers are expected for each drop off?
- Mounting methods? From ladder rack? Steel superstructure? Rack top or underfloor?
- Ducting Colour? Yellow or Black?
- do you require duct to have covers?
- Have you identified high traffic areas?  
Location of HDODF may require larger duct?
- is fiber storage a requirement within the layout?

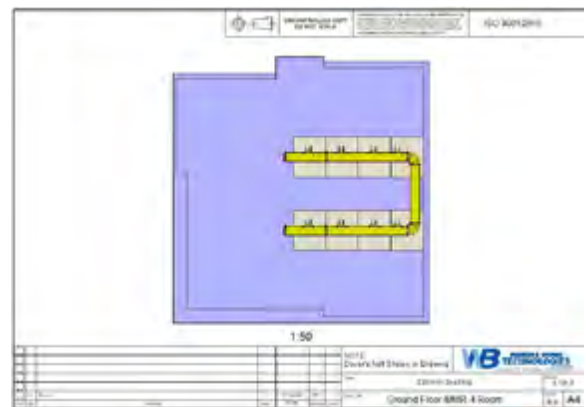
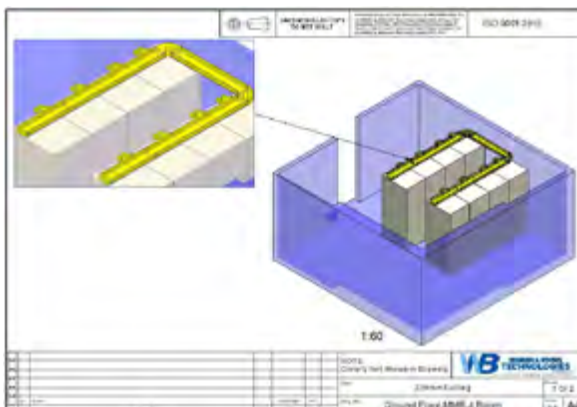
The following pages are a basic example of a smaller installation, typically the customer will provide a drawing of the room or Office showing rack positions etc, where possible this layout will show dimension of the rack and positions etc. This will greatly assist our Design team to redraw the room / office and include the proposed ducting shown in position, we can also show 3d images of the drop outs etc and suggested mounting methods to be employed.



# Example 1

**1****Customer Supplied Drawing****2****The Team will produce an initial drawing / Layout for comment.****3****Customer will provide feedback and any modification made as required.****4****The Team create a final drawing and Bill of Materials.**

Below is an example of what we can produce.







**5 Bill of Materials produced**  
Example output shown below

	PART DESCRIPTION	PART NO	TOTAL QTY	PRODUCT IMAGE
1	220mm x 100mm Duct & Snap on Lid	TC1279-21ASN	18	
2	220mm x 100mm Horizontal Tee & Lid (220mm x 220mm)	TC1279-01A	5	
3	220mm x 100mm Horizontal Elbow & Lid 90 Deg	TC1279-29A	5	
4	220mm x 100mm Vertical Tee & Lid (100mm x 100mm Drop)	TC1279-11A	4	
5	220mm x 100mm Storage Loop & Lid (Inline)	TC1279-207KIT	2	
6	220mm x 100mm Joiner	TC1279-25	40	
7	220mm x 100mm Endcap	TC1279-56	1	
8	Side Drop-Off to 100mm x 100mm Ducting - Raceway	TC1279-111KIT	12	
9	100mm x 100mm Endcap (End Support Bracket)	TC1279-57D	12	
10	100mm x 100mm Duct & Snap on Lid	TC1279-23ASN	4	
11	100mm x 100mm Joiner	TC1279-27	15	
12	Suspension Bracket Mounting Kit Suits 220mm Ducting	TC1279-106KIT	38	

As you can see, there is a Plan View, 3D View and BOM produced.

# Example 2

We can also assist with Design of much larger projects with detailed drawing produced so the end user can understand the complete Installation. Example of a larger scale project is shown below.

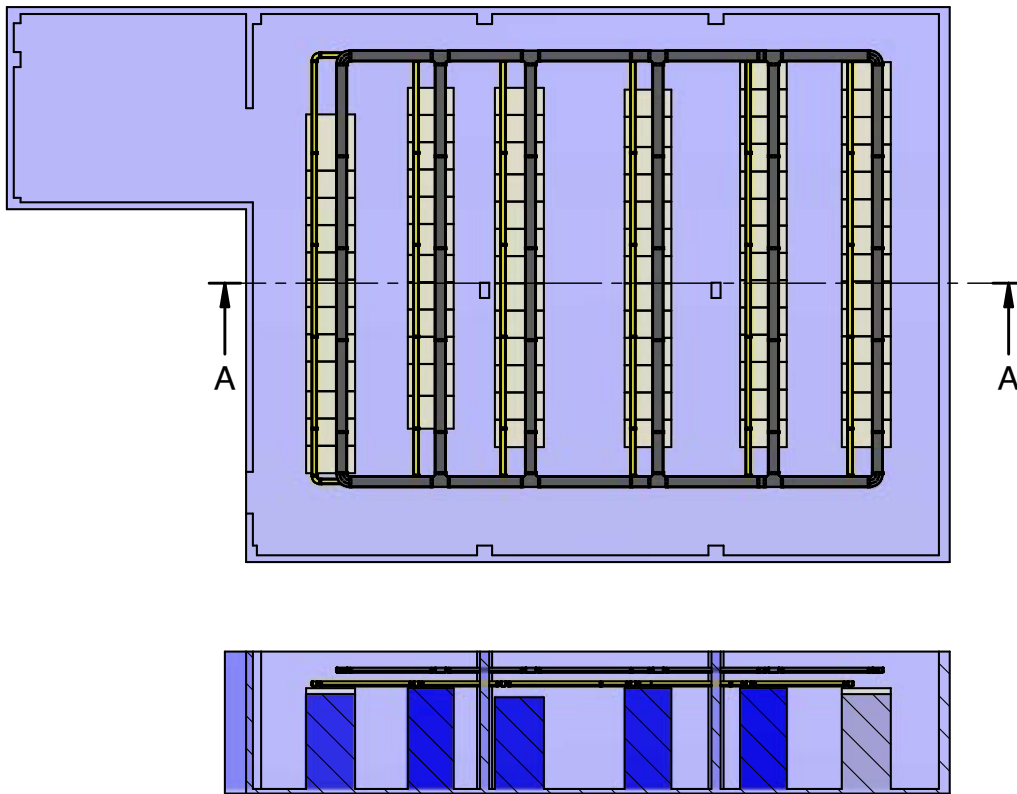


**1 Customer Supplied Drawing**



The Team will produce an initial drawing / Layout for comment .

2



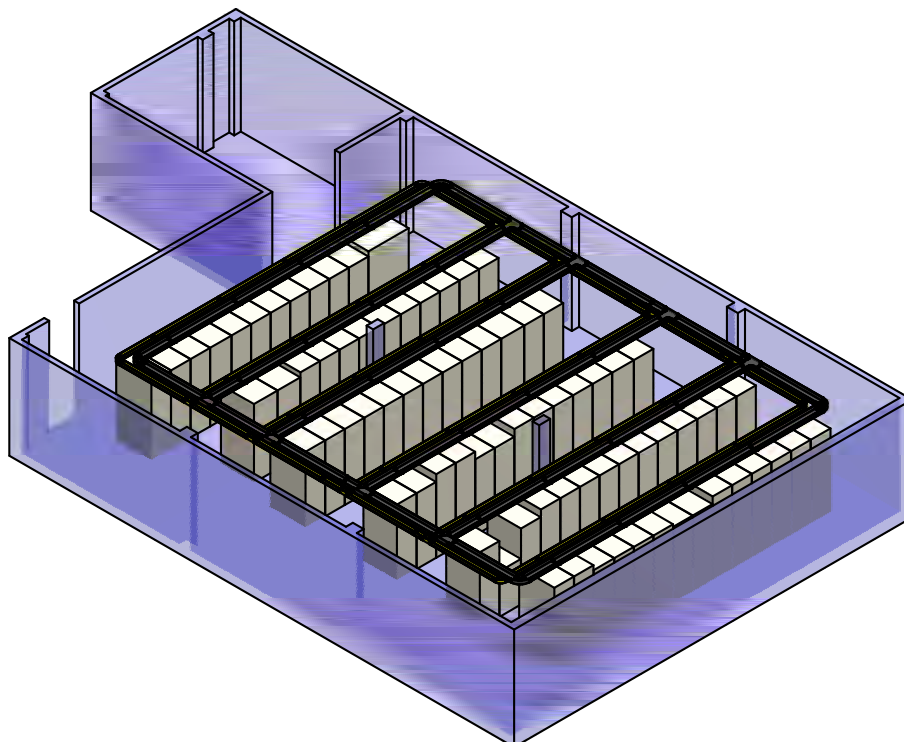
3

Customer will provide feedback and any modification made as required.

4

The Team create a final drawing and Bill of Materials.

Below is an example of what We can produce.























**mulder-hardenberg**

**5**

### Bill of Materials produced

Example output shown below

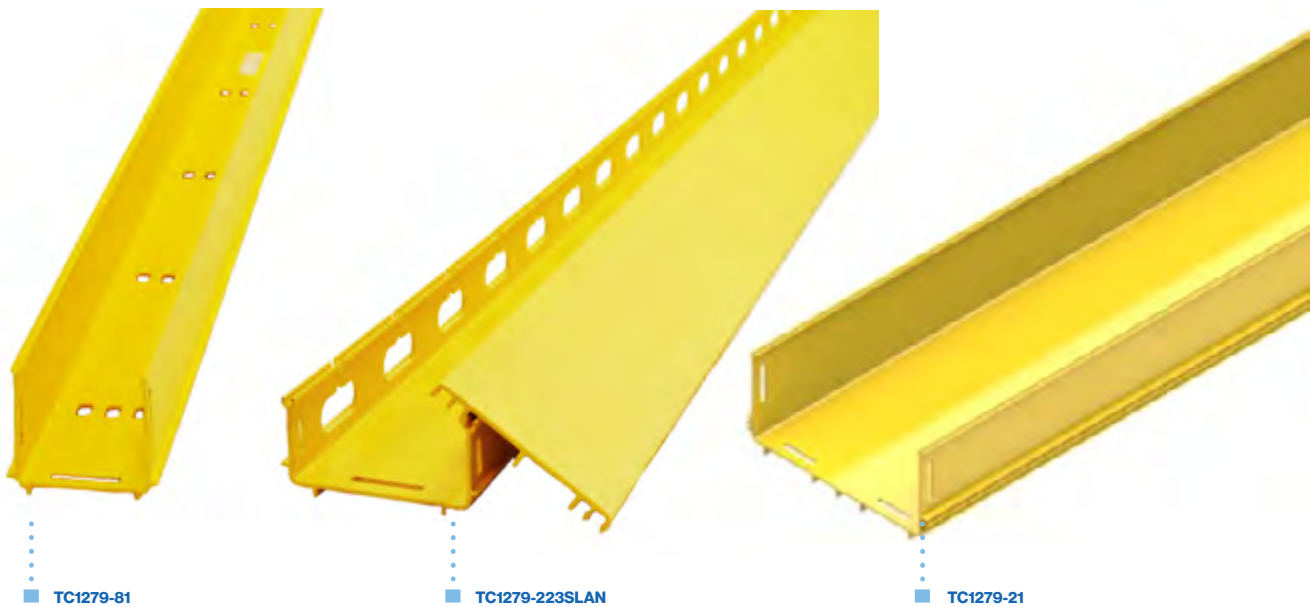
	PART DESCRIPTION	PART NO	TOTAL QTY	PRODUCT IMAGE
1	220mm x 100mm Duct & Snap on Lid	TC1279-21ASNB	38	
2	220mm x 100mm Horizontal Tee & Lid (220mm x 220mm)	TC1279-01AB	8	
3	220mm x 100mm Horizontal Elbow & Lid 90 Deg	TC1279-29AB	4	
4	220mm x 100mm Joiner	TC1279-25B	65	
5	Express Top Outlet Drop-Off to 100mm x 100mm Ducting - Raceway, Vertical (Slots)	TC1279-307ASLB	77	
6	100mm 88mm Tube Outlet	TC1279-456B	77	
7	Convolute Tube Flexible, 75mm ID / 88mm OD x (2 Meter Length) (YELLOW)	TC1279-458B	16	
8	Suspension Bracket Mounting Kit Suits 220mm Ducting	TC1279-106KIT	76	
9	100mm x 100mm Duct & Snap on Lid	TC1279-23ASN	40	
10	100mm x 100mm Horizontal Tee & Lid (100mm x 100mm)	TC1279-03A	8	
11	100mm x 100mm Horizontal Elbow & Lid 90 Deg	TC1279-31A	4	
12	100mm x 100mm Joiner	TC1279-27	65	
13	Express Top Outlet Drop-Off to 50mm x 50mm Ducting - Raceway, Vertical (Slots)	TC1279-531ASL	77	
14	50mm x 50mm Endcap (Tube outlet for 44mm Tube)	TC1279-127D	77	
15	Convolute Tube Æ50mm (2 Meter Length) (YELLOW)	TC1279-53Y	4	
16	Suspension Bracket Mounting Kit Suits 100mm Ducting	TC1279-107KIT	80	

**As you can see, there is a Plan View, 3D View and BOM produced.**

# Straight Duct

YellowDuct® straight duct lengths are available in six sizes with or without covers. Slotted duct / raceway is available in some sizes for vertical drops or applications inside equipment racks to allow cords to exit through the side of the duct. Some sizes are available with hinged covers (hinges included in pack), or clip on covers.

All duct sizes come in 2m (6' 7") lengths, and are slotted at each end for simply snapping together with an appropriate joiner. Most other ducting raceway brands are only available in 6 foot lengths - 10% shorter than YellowDuct®.



SIZE (MM) SIZE (INCHES)	50 X 50 2" X 2"	100 X 50 4" X 2"	100 X 100 4" X 4"	220 X 100 8" X 4"	300 X 100 12" X 4"	600 X 100 24" X 4"
Solid duct	TC1279-81	TC1279-223	TC1279-23	TC1279-21	TC1279-275	TC1279-406
Solid duct & cover	TC1279-81XA	TC1279-223ASN	TC1279-23ASN	TC1279-21ASN	TC1279-275A	TC1279-406A
Solid duct & hinged cover	TC1279-81A	TC1279-223A	TC1279-23A	TC1279-21A	N/A	N/A
Slotted duct (side exit)	TC1279-81SL	TC1279-223SL	TC1279-23SL	N/A	N/A	N/A
Slotted duct & cover	TC1279-81SLXA	TC1279-223SLASN	TC1279-23SLASN	N/A	N/A	N/A
Slotted duct & hinged cover	TC1279-81SLA	TC1279-223SLXA	TC1279-23SLA	N/A	N/A	N/A



# Joiners

YellowDuct® slotted joiners are used to snap together system components and straight ducting raceway. They simply snap into the slots in the end of each piece to be joined.

Alternatively, "Slotless" joiners are available in sizes from 100mm x 50mm upwards and will join the ducting raceway components with or without joining slots.

Note: For a straight ducting raceway that has been cut to length, new slots need to be made with a suitable size slotting tool when using slotted joiners.

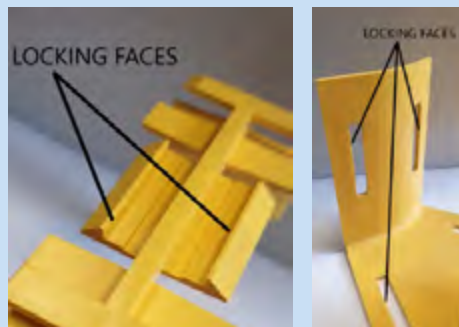
All components (tees, elbows, etc.) come preslotted to aid speedy installation.

*NOTE: You only need to add slots to duct lengths that have been shortened.*



## SLOTTED JOINERS EXPLAINED

The Joiner works on a simple principle of two faces locking together that effectively work better the more load is applied to the matching faces. Below are pictures of the joiner and duct item showing the matching positive locking faces.



Note: a minimum of 3 positive locks are used on each joiner to ensure positive connection on sidewalls and lower section of duct lengths and components.



Picture left shows the joiner in place, note the face of the joiner and duct item are firmly held together giving the positive lock.

As you can see, both faces are square and engaged together while the joiner is in place, also worth noting that this joiner is easily removed by inserting a simple flat blade screwdriver behind the joiner edge and twisting the joiners face out of the component slot. Joiners can be re-used multiple times as neither the joiner or duct components suffer any damage during the install or removal process.

## BENEFITS OF SLOTTED JOINERS

- Strong positive face to face locking
- Easy removal with flat blade screwdriver
- All duct lengths and components are supplied pre slotted, ready to be joined together
- Super fast installation time
- Re-use joiners many times
- Simple easy to fit method, just click into place
- Space saving, slotted joiners are slim line not bulky like slotless or competitor joiners.

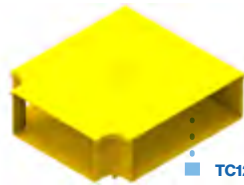
SIZE (MM) SIZE (INCHES)	50 X 50 2" X 2"	100 X 50 4" X 2"	100 X 100 4" X 4"	220 X 100 8" X 4"	300 X 100 12" X 4"	600 X 100 24" X 4"
Joiners (requires slots)	TC1279-73	TC1279-226	TC1279-27	TC1279-25	TC1279-320	N/A
Slotless joiners	N/A	TC1279-459A	TC1279-248A	TC1279-250A	TC1279-287A	TC1279-410A

# Tees, Elbows & Crosses

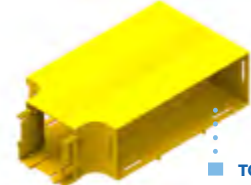
## Horizontal tees

YellowDuct® horizontal tees may be used to branch off the main route or provide a method of breaking into horizontal duct. They are available with or without covers.

*Note: Horizontal tees can also be used as a means of drop off.*



TC1279-316A



TC1279-398A

SIZE (MM) SIZE (INCHES)	50 X 50 2" X 2"	100 X 50 4" X 2"	100 X 100 4" X 4"	220 X 100 8" X 4"	300 X 100 12" X 4"	600 X 100 24" X 4"
Horizontal tee	TC1279-75	TC1279-224	TC1279-03	TC1279-01	TC1279-279	TC1279-412
Horizontal tee & cover	TC1279-75A	TC1279-224A	TC1279-03A	TC1279-01A	TC1279-279A	TC1279-412A
300mm - 220mm duct horizontal tee & cover	TC1279-316A	220mm - 100mm duct horizontal tee & cover			TC1279-09A	N/A
300mm - 100mm duct horizontal tee & cover	TC1279-398A	100mm - 220mm duct horizontal tee & cover			TC1279-393A	N/A

## Horizontal elbows

YellowDuct® horizontal elbows are used to change the direction of horizontal routes. They are available with or without covers.



TC1279-269



TC1279-29A

SIZE (MM) SIZE (INCHES)	50 X 50 2" X 2"	100 X 50 4" X 2"	100 X 100 4" X 4"	220 X 100 8" X 4"	300 X 100 12" X 4"	600 X 100 24" X 4"
30° elbow	TC1279-77-30	N/A	TC1279-47	TC1279-45	N/A	N/A
30° elbow & cover	TC1279-77-30A	N/A	TC1279-47A	TC1279-45A	N/A	N/A
45° elbow	TC1279-77-45	N/A	TC1279-31-45	TC1279-29-45	TC1279-304	TC1279-414
45° elbow & cover	TC1279-77-45A	N/A	TC1279-31-45A	TC1279-29-45A	TC1279-304A	TC1279-414A
90° elbow	TC1279-77	TC1279-269	TC1279-31	TC1279-29	TC1279-387	TC1279-411KIT
90° elbow & cover	TC1279-77A	TC1279-269A	TC1279-31A	TC1279-29A	TC1279-387A	TC1279-411A

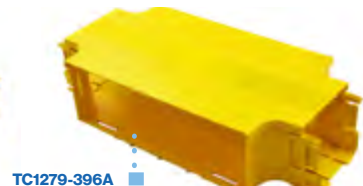
## Horizontal crosses

YellowDuct® horizontal crosses can be used to provide a cross intersection in straight duct.

Reduction crosses join horizontal duct of different sizes.



TC1279-396



TC1279-396A

SIZE (MM) SIZE (INCHES)	50 X 50 2" X 2"	100 X 50 4" X 2"	100 X 100 4" X 4"	220 X 100 8" X 4"	300 X 100 12" X 4"	600 X 100 24" X 4"
Horizontal cross	TC1279-139	TC1279-234	TC1279-71	TC1279-61	TC1279-300	TC1279-416
Horizontal cross & cover	TC1279-139A	TC1279-234A	TC1279-71A	TC1279-61A	TC1279-300A	TC1279-416A
Reduction cross	220 x 100 to 100 x 100	TC1279-65	220 x 100 to 300 x 100		TC1279-331	
Reduction cross & cover	220 x 100 to 100 x 100	TC1279-65A	220 x 100 to 300 x 100		TC1279-331A	
Reduction cross	300 X 100 to 100 x 100	TC1279-396				
Reduction cross & cover	300 X 100 to 100 x 100	TC1279-396A				

## Handy Hint

You can use breakouts in place of crosses to achieve the same result.



## Vertical tees (downspouts) - intrasuite assemblies

YellowDuct® vertical tees can be used to drop cables vertically from horizontal routes into frames or cabinets. Retrofit tees provide open access and are used where cables are already in place. They are available with or without covers.

Can also be used as drop-offs.



SIZE (MM) SIZE (INCHES)	50 X 50 2" X 2"	100 X 50 4" X 2"	100 X 100 4" X 4"	220 X 100 8" X 4"	300 X 100 12" X 4"	600 X 100 24" X 4"
50 x 50mm drop	TC1279-145	N/A	N/A	N/A	N/A	N/A
50 x 50mm drop & cover	TC1279-145A	N/A	N/A	N/A	N/A	N/A
50 x 50mm drop retro	TC1279-145R	N/A	N/A	N/A	N/A	N/A
100 x 50mm drop	N/A	TC1279-228	N/A	N/A	N/A	N/A
100 x 50mm drop & cover	N/A	TC1279-228A	N/A	N/A	N/A	N/A
100 x 100mm drop	N/A	N/A	TC1279-63	TC1279-11	N/A	N/A
100 x 100mm drop & cover	N/A	N/A	TC1279-63A	TC1279-11A	N/A	N/A
100 x 100mm drop retro	N/A	N/A	TC1279-63R	TC1279-11R	N/A	N/A
220 x 100mm drop	N/A	N/A	N/A	N/A	TC1279-277	N/A
220 x 100mm drop & cover	N/A	N/A	N/A	TC1279-329A	TC1279-277A	N/A

## Vertical elbows

YellowDuct® vertical elbows are used to connect horizontal routes at different height, or to allow the fibre path to be raised or lowered to avoid obstacles. Retrofit versions are used where there is existing fibre. They are available with or without covers.



SIZE (MM) SIZE (INCHES)	50 X 50 2" X 2"	100 X 50 4" X 2"	100 X 100 4" X 4"	220 X 100 8" X 4"	300 X 100 12" X 4"	600 X 100 24" X 4"
30° down	TC1279-87-30	N/A	TC1279-111-30	TC1279-123-30	N/A	N/A
30° down & cover	TC1279-87-30A	N/A	TC1279-111-30A	TC1279-123-30A	N/A	N/A
30° down retrofit	N/A	N/A	TC1279-111-30R	TC1279-123-30R	N/A	N/A
30° up	N/A	N/A	TC1279-113-30	TC1279-125-30	N/A	N/A
30° up & cover	N/A	N/A	TC1279-113-30A	TC1279-125-30A	N/A	N/A
30° up retrofit	N/A	N/A	TC1279-113-30R	TC1279-125-30R	N/A	N/A
45° down	TC1279-87-45	N/A	TC1279-111-45	TC1279-123-45	TC1279-285	N/A
45° down & cover	TC1279-87-45A	N/A	TC1279-111-45A	TC1279-123-45A	TC1279-285A	N/A
45° down retrofit	N/A	N/A	TC1279-111-45R	TC1279-123-45R	N/A	N/A
45° up	TC1279-143-45	N/A	TC1279-113-45	TC1279-125-45	TC1279-283	N/A
45° up & cover	TC1279-143-45A	N/A	TC1279-113-45A	TC1279-125-45A	TC1279-283A	TC1279-437A
45° up retrofit	TC1279-143-45R	N/A	TC1279-113-45R	TC1279-125-45R	N/A	N/A
90° down	TC1279-87	TC1279-236	TC1279-111	TC1279-123	TC1279-193	TC1279-425KIT
90° down & cover	TC1279-87A	TC1279-236A	TC1279-111A	TC1279-123A	TC1279-193A	TC1279-425A
90° down retrofit	TC1279-87R	TC1279-236R	TC1279-111R	TC1279-123R	N/A	N/A
90° up	TC1279-143	TC1279-246	TC1279-113	TC1279-125	TC1279-298A	TC1279-427KIT
90° up & cover	TC1279-143A	TC1279-246A	TC1279-113A	TC1279-125A	TC1279-298KIT	TC1279-427A
90° up retrofit	TC1279-143R	TC1279-246R	TC1279-113R	TC1279-125R	N/A	N/A
90° up & down enclosed	N/A	N/A	TC1279-39A	TC1279-37A	N/A	N/A

# Breakouts

## Trumpet outlet

The break out assembly is used to provide a safe, exit for optical fibre cord/s to equipment, at any point in a ducting length. It is normally used to provide a break out in existing duct systems, and clips straight into a cut out in the duct wall. When used as described, the break out assembly provides a curved outlet; to which any standard part can be fitted using a joiner. A lid is supplied.

### OUTLET TRUMPET

TC1279-93A 50 x 50mm  
 TC1279-218A 100 x 100mm  
 TC1279-330A 100 x 220mm  
 TC1279-379A 100 x 300mm



### Handy Hint

You can reverse this breakout to use it as a trumpet if required.

## High capacity duct outlets

These duct outlet kits provide the ideal solution for high capacity optical fibre cords. Duct outlets can be placed anywhere along the duct and minimal time and effort is required to install these outlet components. This solution allows for quick installation, as less cuts are required and is also stronger, as the ribs of duct are not cut.

- Simply clips onto the top of a straight duct length
- Straight duct components ordered separately



### TC1279-452A

High capacity outlet, 100mm x 100mm (4" x 4") 90°

- Provides a 90° down bend (and break-out facility) at any point in a 100mm, 220mm or 300mm duct system.



- Can accept any standard 100mm x 100mm duct item using a joiner.

### Kit includes:

- TC1279-452 (90° down body)
- TC1279-453 (90° down Lid)

### TC1279-454A

High capacity outlet, 220mm x 100mm (8" x 4") 90°

- Provides a 90° down bend (and break-out facility) at any point in a 100mm, 220mm or 300mm duct system.
- Can accept any standard 220mm x 100mm duct item using a joiner.
- Use template 483A for cutout



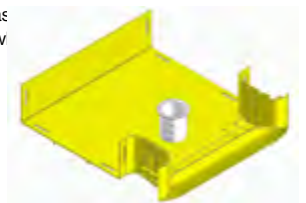
### Includes:

- TC1279-454 (90° down body)
- TC1279-455 (90° down Lid)

### TC1279-279IT

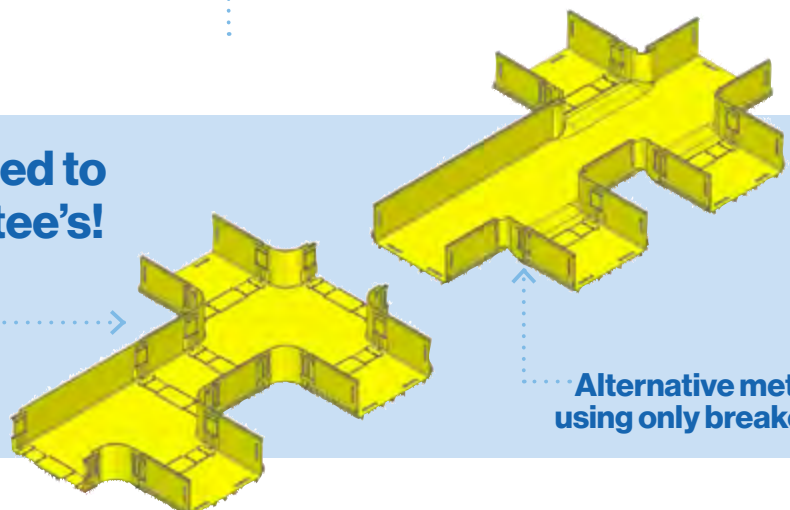
This specialised tee piece can be utilised as breakout/dropout option for applications w separator/island is required

- 300x100mm



**Breakouts can be used to produce crosses or tee's!**

**Traditional method using a cross or tee**



**Alternative method using only breakouts**



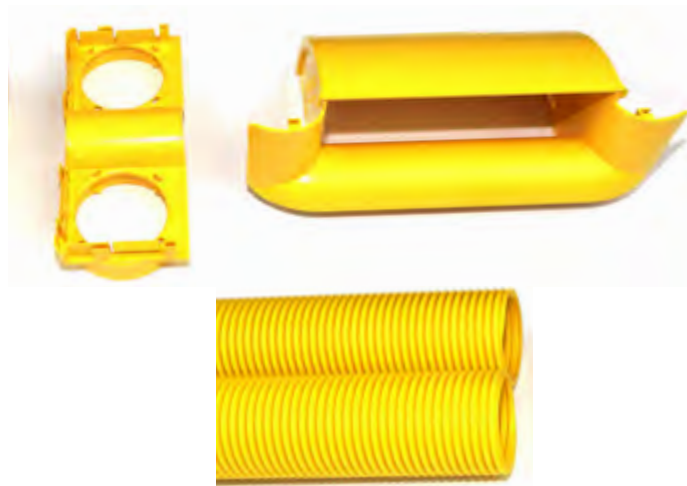
#### TC1279-452KIT

High capacity outlet kit, single, 100mm x 100mm (4" x 4") 90°

- Provides a 90° down bend tube in a 100mm, 220mm or 300mm duct system.
- The 75mm ID/88 mm OD tube can carry either: 360 x 2mm cords; 210 x 2.4mm cords; or 160 x 3mm dia cords maximum.
- Use template 483A for cutout.

#### Kit includes:

- 1x TC1279-452A
- 1 x 2m long convoluted tube TC1279-458
- 1 x TC1279-456 convoluted tube outlet



#### TC1279-454KIT

High capacity outlet kit, dual, 220mm x 100mm (8" x 4") 90°

- Provides a 90° down bend for two large size convoluted tubes in a 100m, 220mm or 300mm duct system.
- Each 75m ID tube can carry up to 360 x 2mm cords.
- Use template 483A for cutout.

#### Kit includes:

- 1x TC1279-454A
- 2 x 2m long convoluted tubes TC1279-458
- 1 x TC1279-457 dual convoluted tube outlet

## Other duct drop-off components



#### TC1279-212KIT

Radius guide (pack of 10) to suit 30mm, 50mm, 100mm slotted duct.



#### RAMP UP

TC1279-42 small ramp up  
TC1279-294 large ramp up

*\* used in conjunction with various dropouts.*

## Miscellaneous items



#### TC1279-156 Universal radius guide

This guide is a simple means of providing a 30mm radius guide that eliminates fibre stress through bending.



#### TC1279-72KIT Pigtail radius guide kit

The pigtail radius guide provides a 90° bend, but the guides are interlocking so that many can be joined to form U turns, circles & spirals as required (10 per kit).



#### TC1279-570KIT Duct cable separator kit for 100mm, 220mm and 300mm duct

The duct cable separator kit is installed longitudinally along the length of a duct run, to provide a separator or divider in the duct. The item is used to create separate compartments for different cords or cables.



# Express Outlets

## Express top outlet (clip on) drop-off kits 100 x 100mm exit

100 x 100mm express top outlet drop-off solutions are suitable for 100 x 50mm, 100 x 100mm, 220 x 100mm, 300 x 100mm and 600 x 100mm straight duct lengths. These style outlets simply clip onto the top of the ducting raceway, providing an express outlet (drop) along a length of ducting. No slotting, bolting or cutting is required for installing these components onto the straight duct length.

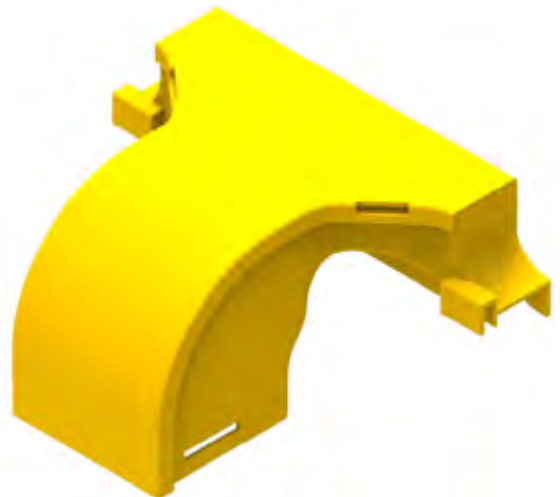
- Simply clips onto the top of a straight duct length
- Straight duct components ordered separately



### TC1279-531A

Express top outlet drop-off to 50mm x 50mm ducting raceway, horizontal

- This drop can fit between 300-400 x 2mm cables.
- Fits on any duct 100mm x 50mm or larger.



### TC1279-307A

Express top outlet drop-off to 100mm x 100mm ducting raceway, vertical

- This drop can fit between 300-400 x 2mm cables.
- Fits on any duct 100mm x 50mm or larger.



# Drop-off solutions

**These components provide different methods of allowing fibres to enter or leave the fibre optic ducting raceway. They can be purchased as kits or as individual items.**

## Side spill out kit

This drop-off assembly can be installed anywhere along the length of a 100mm high duct to allow up to 80 x 2mm optical fibre cords to leave the duct horizontally or vertically (if installed on the floor of the straight duct). Use cut out tool / hole saw TC1279-604KIT with a drill to make a cut into the ducting.



### TC1279-602A

Duct side spill out, straight outlet to convoluted tubing



### TC1279-609A

Duct side spill out, 90°, up / down / left / right to convoluted tubing



*Note: Convoluted tube TC1279-53Y or TC1279-53B suits these drop offs.*

## Side drop-off kits - 50 x 50mm exit

50mm (2") duct drop-off solutions are suitable for 50 x 50mm, 100 x 50mm, 100 x 100mm, 220 x 100mm, 300 x 100mm and 600 x 100mm straight duct lengths.

- Use tool TC1279-50KIT to make cut-out in side of duct (or template 483A)
- Round convoluted tube, square convoluted tube and straight duct components ordered separately



### TC1279-41KIT

50mm (2") side drop-off (outlet) to 50mm dia. round convoluted tube

- Can fit approx. 80 x 2mm cables
- Also includes duct ramp



### TC1279-41A

50mm (2") side drop-off (outlet only)

- Can fit approx. 80 x 2mm cables



### TC1279-89KIT

Side drop-off to 50mm (2") square convoluted tube (TC1279 - 85YEL)

- Can fit approx. 100-150 x 2mm cables
- Also includes duct ramp





**TC1279-89A**

Side drop-off (outlet) to 50mm square only

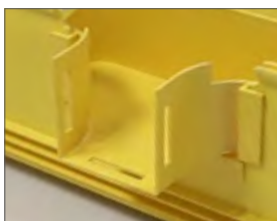
- Can fit approx. 100-150 x 2mm cables.
- Fits square tube TC1279 - 85YEL.



**TC1279-93KIT**

Side drop-off kit to 50mm ducting raceway

- Can fit between 100-150 x 2mm cables
- Full kit for vertical drop (includes duct outlet, duct ramp, joiner and vertical elbow)
- Straight duct lengths ordered separately



**TC1279-93A**

Side drop-off outlet to 50mm ducting raceway

- Can fit between 100-150 x 2mm cables
- Straight duct lengths, duct ramp, joiner and elbow ordered separately



## Side drop off kits - 100 x 50mm exit

100 x 50mm duct drop-off solutions are suitable for 50 x 50mm, 100 x 50mm, 100 x 100mm, 220 x 100mm and 300 x 100mm straight duct lengths.

- Use tool TC1279-231KIT to make cut-out in side of duct.
- Straight duct components ordered separately

*\* Down elbow not included in kit. Ordered separately - TC1279-236A*



**TC1279-232KIT**

Side drop-off to 100mm x 50mm ducting raceway

- Can fit approx. 250-300 x 2mm cables
- Also includes duct ramp (TC1279-294)

**TC1279-232A**

Side drop-off (outlet only) to 100mm x 50mm ducting raceway

- Can fit between 250-300 x 2mm cables





## Side drop-off kits - 100 x 100mm exit

100 x 100mm duct drop-off solutions are suitable for 100 x 50mm, 100 x 100mm, 220 x 100mm and 300 x 100mm straight duct lengths.

- Use tool TC1279-231 to make cut-out in side of duct or template TC1279-483A).
- Straight duct components ordered separately.



### **TC1279-111KIT**

Side drop-off to 100mm x 100mm ducting raceway

- This drop can fit between 500-600 x 2mm cables.
- Use tool TC1279-231 to make cut-out in side of duct.



### **TC1279-218A**

Side drop-off (outlet only) to 100mm x 100mm ducting raceway

- This outlet can fit between 500-600 x 2mm cables.
- Use tool TC1279-231KIT or template 483A to make cut-out in side of duct.



# Reducers

YellowDuct® reducers allow different size ducts to be joined together. They are available with or without covers.

TC1279-07A ■ . . .



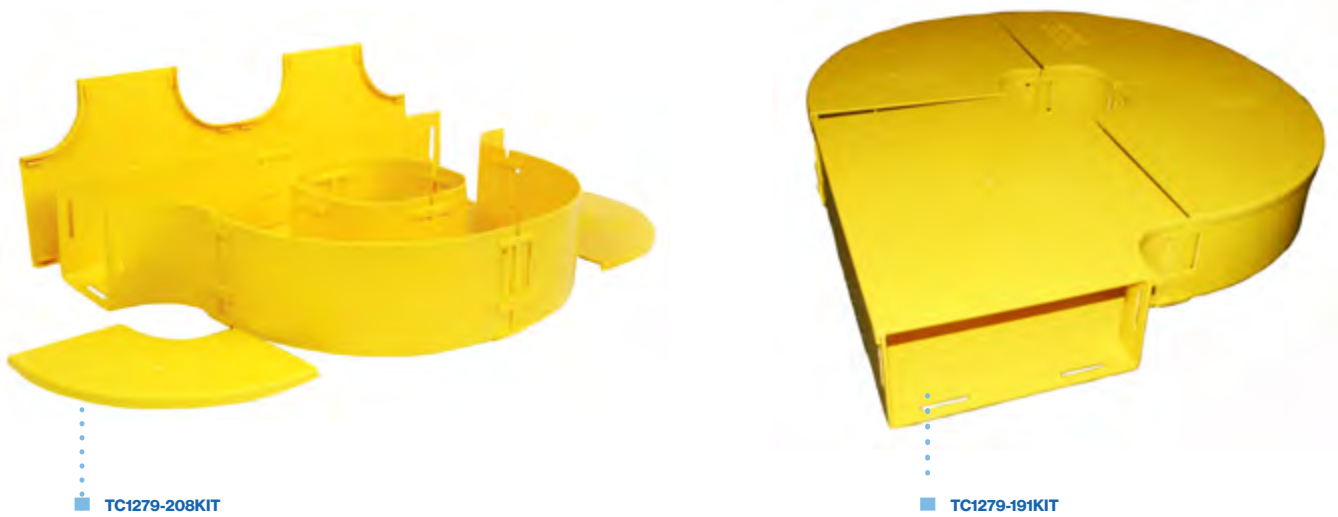
MAIN SIZE (MM) REDUCTION SIZE (MM)	100 X 50 50 X 50	100 X 100 50 X 50	100 X 100 100 X 50	220 X 100 100 X 100	300 X 100 220 X 100	600 X 100 300 X 100
Reducer	TC1279-238	TC1279-91	TC1279-240	N/A	TC1279-281	TC1279-408
Reducer & cover	TC1279-238A	TC1279-91A	TC1279-240A	N/A	TC1279-281A	TC1279-408A
Reducer right hand	N/A	N/A	N/A	TC1279-05	N/A	N/A
Reducer right hand & cover	N/A	N/A	N/A	TC1279-05A	N/A	N/A
Reducer left hand	N/A	N/A	N/A	TC1279-07	N/A	N/A
Reducer left hand & cover	N/A	N/A	N/A	TC1279-07A	N/A	N/A



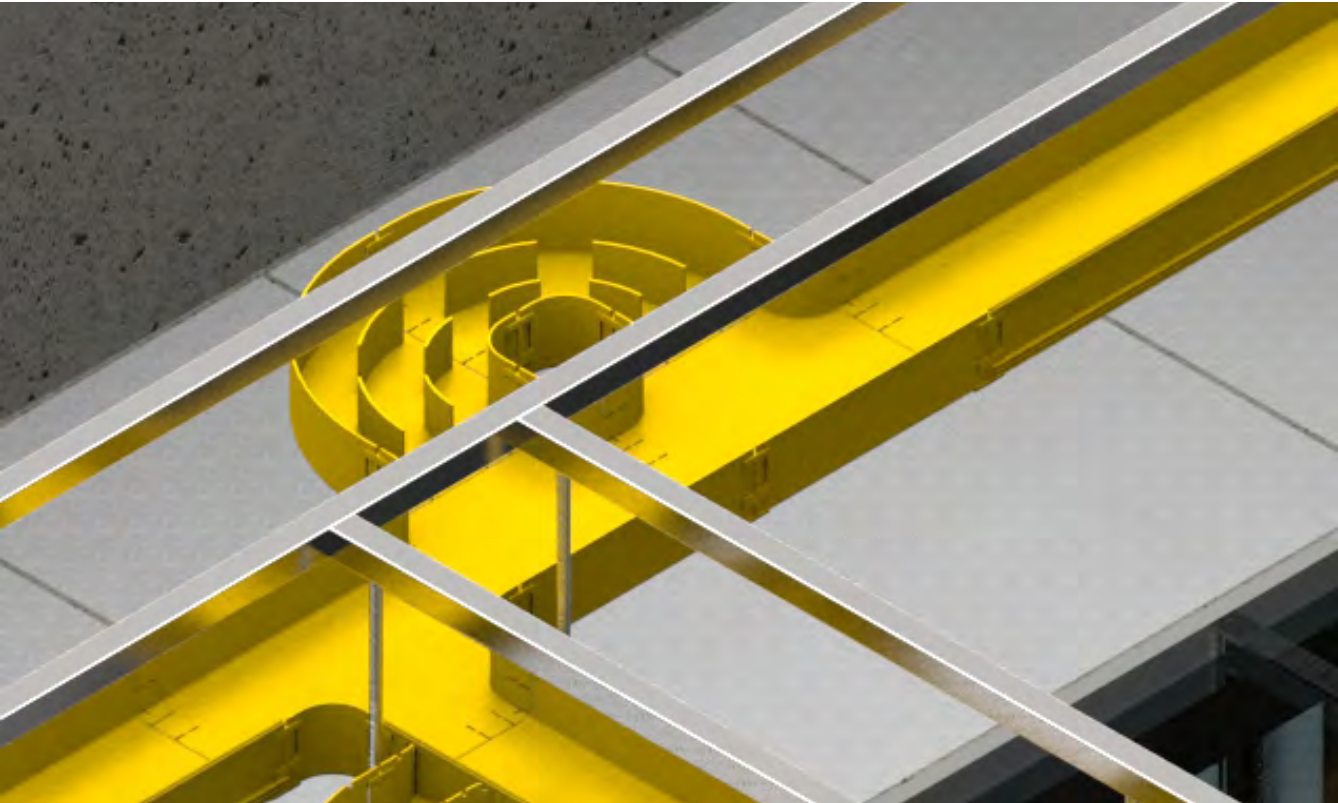
# Fibre Storage Loops

## Fibre storage loops

YellowDuct® fibre storage loops are used to safely store excess optical fibre cable lengths and can be placed in any horizontal route or inside cabinets. They are available in inline or offset versions.



SIZE (MM) SIZE (INCHES)	50 X 50 2" X 2"	100 X 50 4" X 2"	100 X 100 4" X 4"	220 X 100 8" X 4"	300 X 100 12" X 4"
Inline	TC1279-209KIT	TC1279-186KIT	TC1279-208KIT	TC1279-207KIT	TC1279-485KIT
Offset	TC1279-178KIT	TC1279-195KIT	TC1279-192KIT	TC1279-191KIT	TC1279-315KIT

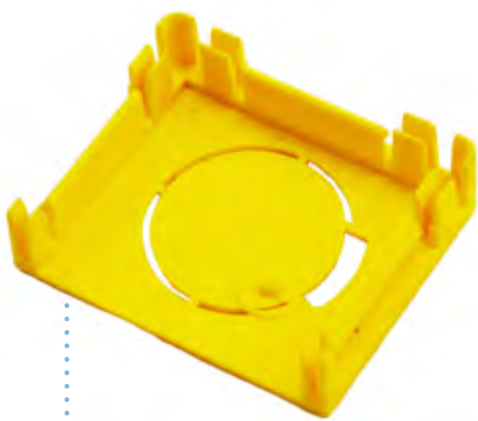




# End caps

## End caps

YellowDuct® end caps are used to close off the end of a horizontal or vertical route of duct. However, some end caps can be used as drop out options incorporating various tube diameters to feed the fibre to racks. Some are sealed, others have knock outs or spigots for convoluted tubing or fibre feedout.



■ TC1279-127B



■ TC1279-57D



■ TC1279-456

SIZE (MM) SIZE (INCHES)	50 X 50 2" X 2"	100 X 50 4" X 2"	100 X 100 4" X 4"	220 X 100 8" X 4"	300 X 100 12" X 4"	600 X 100 24" X 4"
Sealed	N/A	TC1279-227	TC1279-57	TC1279-56	N/A	N/A
Sealed (for use with slotless joiners)	N/A	N/A	TC1279-251	TC1279-252	TC1279-288	TC1279-435
2 x 20mm dia knockouts	TC1279-127	N/A	N/A	N/A	N/A	N/A
1 x 38mm dia knockout	TC1279-127B	N/A	N/A	N/A	N/A	N/A
1 x 38mm cutout	TC1279-127C	N/A	N/A	N/A	N/A	N/A
Tube outlet for 50mm tube	TC1279-127D	N/A	N/A	N/A	N/A	N/A
2 x 32mm dia knockouts	N/A	N/A	TC1279-57B	N/A	N/A	N/A
2 x 46mm dia holes	N/A	N/A	TC1279-57C	N/A	N/A	N/A
End support bracket	TC1279-127F	N/A	TC1279-57D	N/A	N/A	N/A
88mm tube outlet	N/A	N/A	TC1279-456	N/A	N/A	N/A
Dual 88mm tube outlets	N/A	N/A	N/A	TC1279-457	N/A	N/A

# Tubing

YellowDuct® tubing is used for feeding entering or exiting optical fibres from the ducting raceway into equipment racks. They are convoluted or ribbed, to allow adjustment if drops cannot be positioned exactly over or under equipment. Some are available with removable covers, or split for ease of cable installation.

Square  
convoluted  
tube



Openable  
convoluted  
tube



Round  
convoluted  
tube



DESCRIPTION	YELLOW	BLACK
Convoluted tube 50mm dia (1 meter length)	TC1279-26Y	TC1279-26
Convoluted tube 50mm dia (2 meter length)	TC1279-53Y	TC1279-53
Convoluted tube 25mm dia (2 meter length)	N/A	TC1279-54 *
Convoluted tube 38mm dia (2 meter length)	N/A	TC1279-68
Convoluted tube 50mm square (350mm length)	TC1279-85YEL	TC1279-85BLK
Openable convoluted tube with cover 50mm square (350mm length)	TC1279-85KIT	N/A
Convoluted tube 30mm square (350mm length)	TC1279-88	N/A
Convoluted tube split 20mm dia (2 meter length)	N/A	TC1279-100 *
Convoluted tube split with cover 50mm dia (1 meter length)	N/A	TC1279-350
Convoluted tube, flexible, 75mm ID/88mm OD x 2 metres long	TC1279-458	N/A
Convoluted tube, flexible, 75mm ID/88mm OD x 1 metres long	TC1279-458-1	N/A
Convoluted tube, flexible, 65mm ID/83mm OD x 2 metres long	TC1279-471	N/A
Convoluted tube, flexible, 65mm ID/83mm OD x 1 metres long	TC1279-471-1	N/A
Convoluted tube, flexible, 75mm ID/88mm OD x 1.15 metres long	TC1279-479	N/A
Convoluted tube 63mm ID/ 65mm OD x 1.1 metres, c/w two joiners to connect to 75mm ID/88mm OD convoluted tube	TC1279-480A	N/A
Convoluted tubing adaptor kit, 75mm ID/ 88mm OD to 44mm ID/ 50mm OD tubing	TC1279-494KIT	N/A

\*Grey

# Adaptors

YellowDuct® adaptors are used to connect parts from other products to the YellowDuct® ducting raceway. Most other ducting brands can be slotted with a slotting tool to suit one of our slotted joiners.



DESCRIPTION	PART NO.
Adaptor kit 100 x 100 YellowDuct® to Commscope 4"	TC1279-109KIT
Adaptor kit left hand YellowDuct® 220 x 100mm to Commscope 6"	TC1279-149KIT
Adaptor kit right hand YellowDuct® 220 x 100mm to Commscope 6"	TC1279-150KIT
Adaptor kit 100mm vertical YellowDuct® to Commscope 4", 6" or 12"	TC1279-307SLKIT
Adaptor kit YellowDuct® 300 x 100mm to Commscope 12"	TC1279-327KIT
Adaptor kit right hand YellowDuct® 100 x 100mm to Commscope 6"	TC1279-472KIT
Adaptor kit left hand YellowDuct® 100 x 100mm to Commscope 6"	TC1279-473KIT
Adaptor kit right hand YellowDuct® 220 x 100mm to Panduit 6"	TC1279-486KIT
Adaptor kit left hand YellowDuct® 220 x 100mm to Panduit 6"	TC1279-487KIT
Adaptor kit YellowDuct® 300 x 100mm to 12" x 4" Panduit duct	TC1279-492KIT
Adaptor kit 100mm YellowDuct® to 4" Panduit duct	TC1279-173KIT

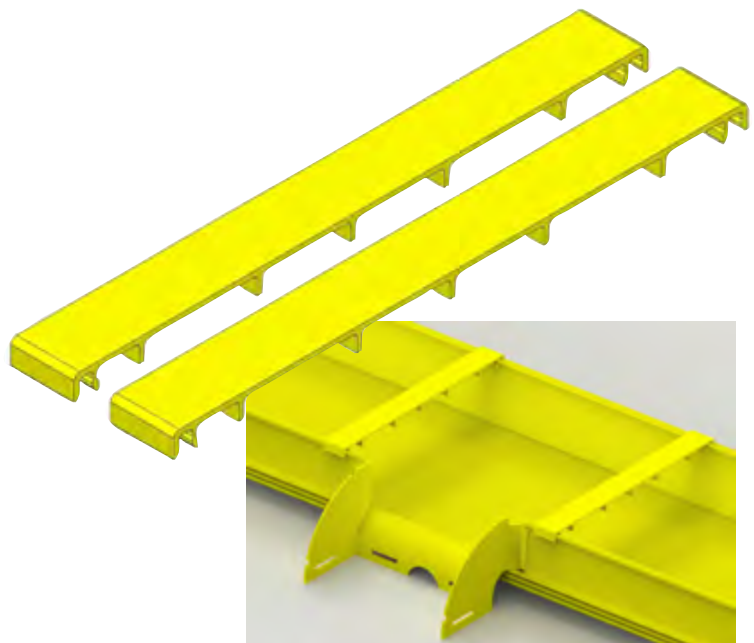
# Retainer Clips

These clips provide additional support near the express drops where covers have not been used.

Kit contains 10 pieces.

## Suits:

- 100 x 100mm TC1279-24SKIT (20 Pairs)
- 220 x 100mm TC1279-22SKIT (20 Pairs)
- 300 x 100mm TC1279-276SKIT (20 Pairs)
- 600 x 100mm TC1279-407SKIT (20 Pairs)





# Mounting solutions

**YellowDuct® mounting hardware is used to support the ducting raceway from different structures.**

Although the most common components are shown here, many other components that have been developed for specific applications or customer requests are also available. Mounting systems are also available for retro-fitting to existing installations. Custom components can also be manufactured to your specifications. Please contact your sales office or distributor for assistance.

We probably already have a mounting solution that meets your requirement.

## Metal mounting kits steel work or wall mounting

Provides vertical & horizontal mounting flexibility to steel-work or walls.



**TC1279-438A**  
600mm x 100mm duct mounting bracket assembly



**TC1279-103KIT**  
100mm duct support mounting bracket kit



**TC1279-104KIT**  
100mm duct wall mounting bracket  
The wall mounting bracket is used to attach 100mm plastic duct to any existing structure.



**TC1279-133KIT**  
220mm duct wall mounting bracket kit  
The wall mounting bracket is used to attach 220mm plastic duct to any existing structure.  
*Note: Version for 100mm duct is TC1279-104KIT.*



**TC1279-161KIT**  
50, 100mm wall mounting extension kit  
This flexible mounting kit is used to provide a means of attaching 30mm, 50mm and 100mm duct to any existing structure.  
*Note: Individual duct "C" type brackets are required in addition to this kit (see mounting hardware).*



**TC1279-183KIT**  
Mounting bracket kit, heavy duty, wall & strut  
This kit has two vertical slots suited to wall or Unistrut™ mounting and provides a single long slot to accept duct mounting brackets up to 220mm size.  
*Note: Individual duct "C" type brackets are required in addition to this kit (see mounting hardware).*



## TC1279-168KIT

Horizontal mounting kit, 50mm

This mounting kit is a simple adjustable means of mounting 50mm duct in a vertical or horizontal plane. It can be used to mount duct in equipment racks and as vertical risers, etc. It includes heavy duty, adhesive backed hook & loop tape, to ensure flexible mounting without movement.



## TC1279-130KIT

Mounting bracket kit for 50mm duct

This kit is a simple and adjustable means of attaching or mounting either 50mm or 30mm duct, in either a vertical or horizontal plane.



## TC1279-78KIT

Mounting bracket kit for 50mm duct

This is simply a bracket, that can be fixed to the duct and any existing building.



## TC1279-303A

Side mounting bracket, heavy duty

This side mounting bracket is used to install & secure 100mm, 220mm, 300mm duct to existing threaded rods.

*Note: Used in conjunction with "C" type mounting hardware.*



## TC1279-102

Wall mounting bracket



## TC1279-126KIT

Wall mounting bracket kit, horizontal



## TC1279-DCUM-10

Duct Clamp Universal for 600MM  
(pack of 10 clamps)

## Mounting hardware duct "C" type brackets

This assembly consists of a standard (50mm, 100mm, 220mm, 300 mm) duct support bracket. This assembly is used where the duct is directly mounted to flat brackets with 13mm (1/2" clearance) dia holes.

SIZE	PART NO.
50mm	TC1279-147A
100mm	TC1279-16A
220mm	TC1279-15A
300mm	TC1279-297A

## TC1279-147A



## Suspension kits

These suspension mounting bracket kits are used to attach either 300mm, 220mm or 100mm plastic duct to existing steelwork, from above.

Note: All metal brackets are either nickel plated or black powdercoat paint.



**TC1279-297KIT**  
300mm heavy duty suspension duct mounting kit



**TC1279-106KITA**  
220mm duct suspension bracket kit  
(including 12mm threaded rod)

**TC1279-106KITB**  
220mm duct suspension bracket kit  
(including 16mm threaded rod)



**TC1279-297AKIT**  
300mm x 100mm duct system, mounting bracket  
kit, suspension type, 1/2" with threaded rod

**TC1279-297BKIT**  
300 x 100mm duct system, mounting bracket kit,  
suspension type, 5/8" with threaded rod



**TC1279-107KITA**  
100mm duct suspension bracket kit  
(including 12mm threaded rod)

**TC1279-107KITB**  
100mm duct suspension bracket kit  
(including 16mm threaded rod)



**TC1279-106KIT**  
220mm duct suspension bracket kit



**TC1279-107KIT**  
100mm duct suspension bracket kit

## Underfloor mounting kits

**TC1279-274**  
Under floor mounting bracket



**TC1279-197KIT**  
Vertical strut mounting kit

This clamp is a means of attaching either a 220mm or 100mm duct system to (up to) 30mm (1") diameter tube or 25mm (1") square tubes in an under floor system.



Note: Used in conjunction with "C" type mounting hardware.

## Ladder rack mounting



### TC1279-370KIT

100, 220, 300mm Ladder rack mount kit, large

This clamp is a means of attaching either 100mm, 220mm or 300mm duct systems to 1" and 2" ladder racks.

*Note: Heavy duty. Used in conjunction with "C" type mounting hardware.*



### TC1279-154KIT

Ladder rack mount assembly, 50mm duct

These clamps are a means of fixing either 30mm and 50mm duct systems to 1.5" and 2" ladder racks.

*Note: Used in conjunction with "C" type mounting hardware.*



### TC1279-155KIT

Ladder rack mount kit, 100mm and 220mm duct

These clamps are a means of fixing either 100mm, 220mm duct systems to 1.5" and 2" ladder racks.

*Note: Used in conjunction with "C" type mounting hardware.*



### TC1279-572KIT

Support bracket, 220mm x 100mm duct

This supporting bracket set, enables a 220mm x 100mm duct system to be installed in the aisle, below the overhead super structure, in front of the racks to be serviced.





## "C" Rail mounting kits

These kits are attached to the rail by two screws. Multiple holes provide vertical adjustment in 21mm increments.

- Simple clamp system adapts to "C" rail
- Suits 100mm, 220mm or 300mm duct systems
- Includes: nuts, screws and washers



### TC1279-155AKIT

"C" rail mounting kit, 100mm duct  
*Note: Includes 100mm duct bracket.*



### TC1279-155BKIT

"C" rail mounting kit, 220mm duct  
*Note: Includes 220mm duct bracket.*



### TC1279-155CKIT

"C" rail mounting kit, 300mm duct  
*Note: Includes 300mm duct bracket.*

## Raised mounting kits



### TC1279-13A

Mounting bracket assembly,  
220mm duct with M12 threaded rod  
The mounting bracket provides an adjustable mounting mechanism for the 220mm plastic ducting system.



### TC1279-14A

Mounting bracket assembly,  
100mm duct with M12 threaded rod  
The mounting bracket provides an adjustable mounting mechanism for the 100mm plastic ducting system.



### TC1279-129KIT

Mounting plate kit, 50mm duct  
Is used for quick and easy attaching to 30mm & 50mm duct.

# Tooling components

## Ducting slotting tool - foot operated

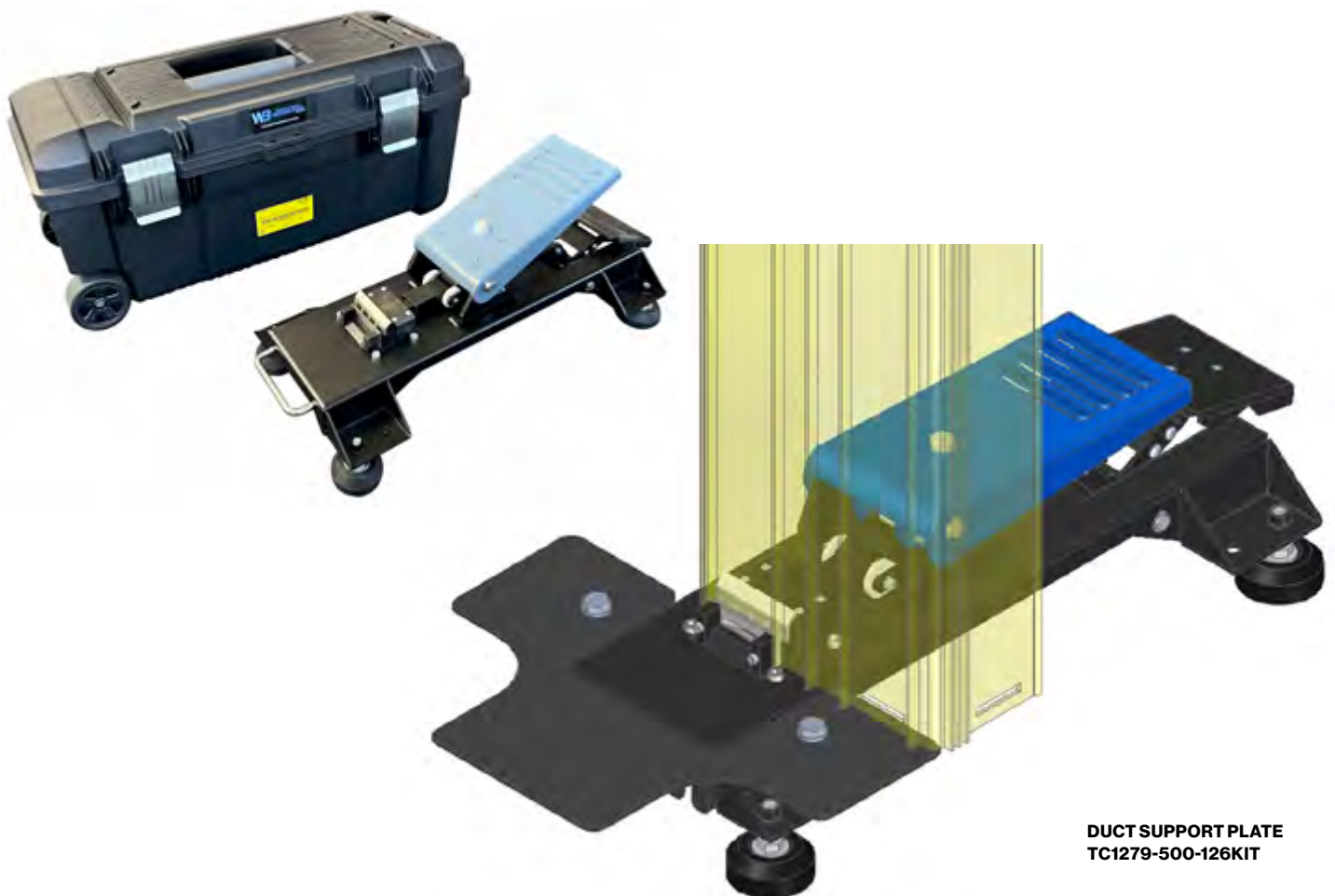
Features & benefits:

- Ducting can be easily aligned and positioned on slotting jig
- Fast and easy to use slotting mechanism which slots in seconds
- Compact, easy to transport unit which only weighs 8kg
- Steady and robust platform
- Ergonomically designed, no stress or heavy manual operation required as it only requires leg power
- Conforms to OH&S standards
- Repeatedly produces accurate slots
- Slots an end of duct in less than 30 seconds.

*Note: Ideal for large installations.*

DUCT SIZE (MM)	DUCT SIZE (INCHES)	PART NO.
100mm x 100mm	4" x 4"	TC1279-23
220mm x 100mm	8" x 4"	TC1279-21
300mm x 100mm	12" x 4"	TC1279-275

PART NO.	DESCRIPTION
TC1279-500KIT	Foot operated duct slotting tool (with tool box)
TC1279-500-13	Tool box - suit foot slotter (Plastic tool box only)
TC1279-500-126KIT	Duct support plate



### Ducting hydraulic hand held slotting tool

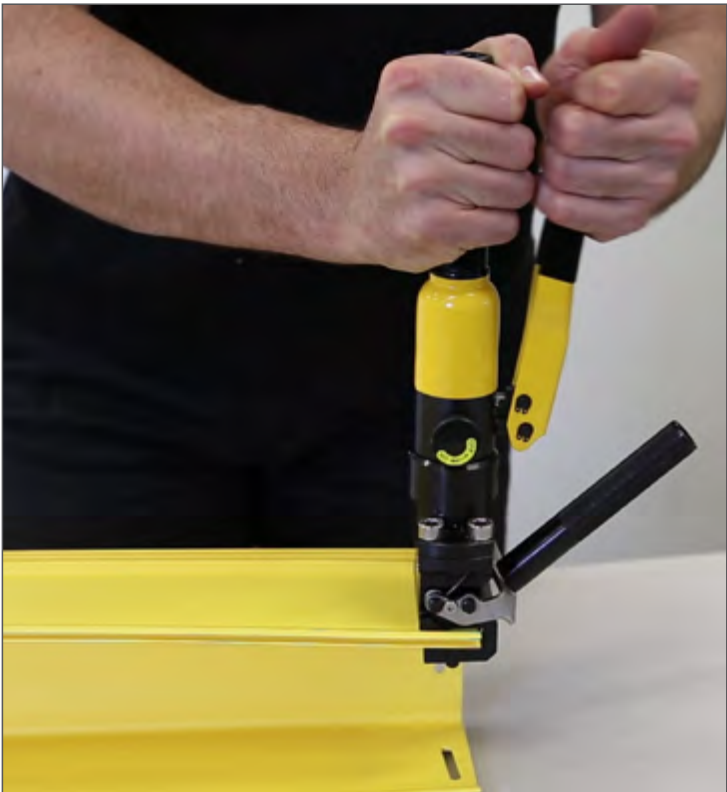
The hand held hydraulic duct slotting tool is a revolutionary design that takes the stress and effort out of slotting duct. Take advantage of this new method of safely and easily slotting ducting, which will improve the efficiency of your installations and save you and your customer time and money.

DUCT SIZE (MM)	DUCT SIZE (INCHES)	PART NO.
100mm x 100mm	4" x 4"	TC1279-23
220mm x 100mm	8" x 4"	TC1279-21
300mm x 100mm	12" x 4"	TC1279-275

PART NO.	DESCRIPTION
TC1279-501	100mm hand hydraulic tool
TC1279-501-13S	100mm hand hydraulic tool head
TC1279-501KIT	100mm hand hydraulic tool kit with tool box

#### Features & benefits:

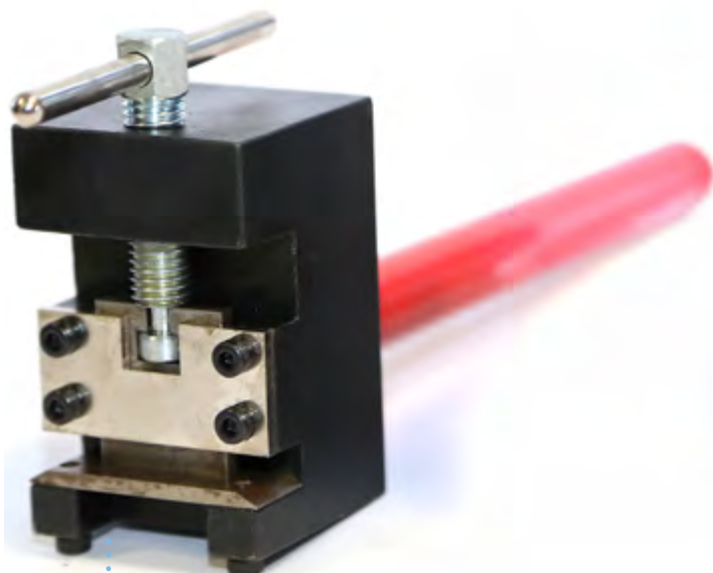
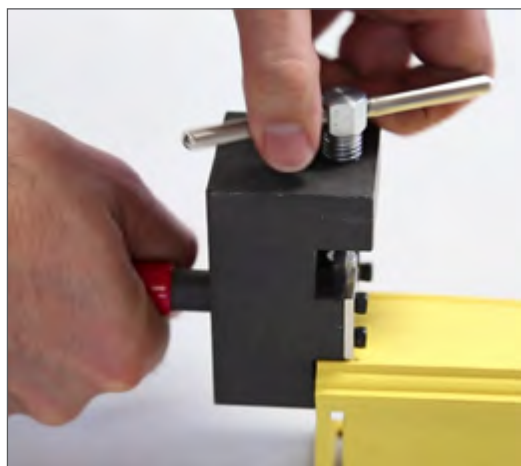
- No need to exert excessive force since the unit is hydraulic powered
- Safe & easy to use
- Ergonomically designed
- Compact design which is easy to transport and doesn't require excess storage space
- Saves you time by slotting duct quickly
- Allows you to slot an end of duct in less than 1 minute
- Lightweight, only 2kg
- Repeatedly produces accurate slots
- Slots a variety of duct sizes from 100mm x 50mm up to 300mm x 100mm.



## Side slotting tool

The slotting tool is used to make a small slot in the bottom and both sides at the end/s of duct. This process is a simple mechanical means of preparing a shortened length duct for connection to another standard part: e.g. elbow, cross connector, tees, adaptor assembly, duct end or drop offs, etc.

PART NO.	DESCRIPTION
TC1279-230	for 100mm x 50mm duct (side slots only)
TC1279-51	for 100mm x 50mm duct (base slots only), for 220mm x 100mm, 300mm x 100mm, 100mm x 100mm
TC1279-118	for 50mm duct



TC1279-118



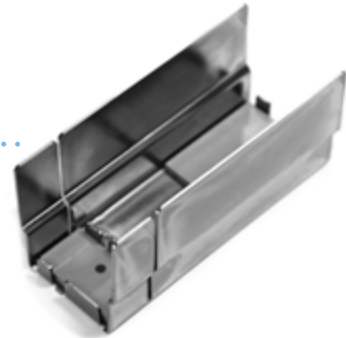
TC1279-51



## Mitre kits

Mitre boxes are used to provide a means of producing an accurate and straight cut on ducting, essential for correct alignment of the slotting tools and joiners.

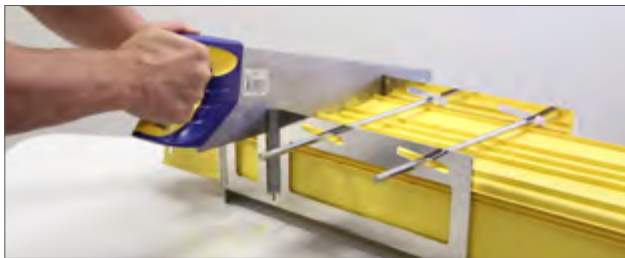
TC1279-118-07  
Mitre box duct,  
50mm



TC1279-MITRE  
Mitre box duct 300mm,  
220mm, 100mm



TC1279-483A  
Cut out jig, for drop-offs  
and break out guides  
- suitable for all ducts  
from 50mm to 600mm



## Duct spill out tool

This kit is used to cut the 60mm hole in the side and bottom of the duct to accommodate drop-outs (TC1279-602A, TC1279-609A)

*Note: If optic fibre cords already in duct, use TC1279-50-3 to protect the cords.*



TC1279-604KIT  
Duct spill out and  
installation template

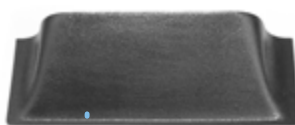


## Miscellaneous items

100X060  
Panel saw (jack)



TC1279-50-3  
Fibre spreader  
and protector



97X01  
Wrench, ratchet  
1/2" drive

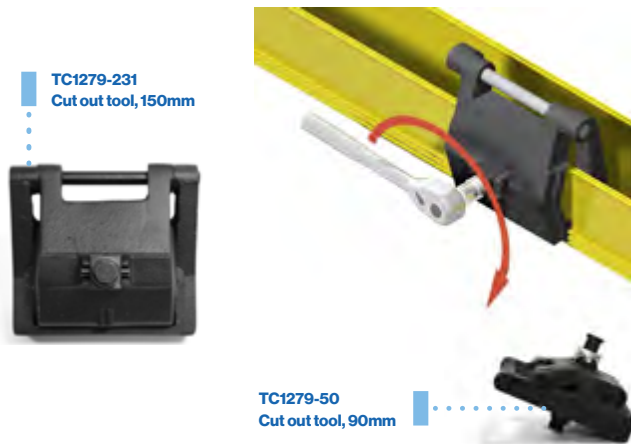


62X001  
Socket



## Cut out tools

Cut out tools are used to cut notches in the side of the duct to accommodate drop-outs. They are supplied with a fibre spreader to protect previously installed fibres when using the tools.



## Duct tool kits



DESCRIPTION	PART NO.	+ MORE DETAILS	TC1279-140KIT 50MM SLOTting KIT	TC1279-118KIT 50MM SLOT & MITRE KIT	TC1279-51A 100, 220MM SLOT TOOL & WRENCH KIT	TC1279-51KIT 100, 220, 300MM CUT & SLOT KIT	TC1279-50KIT 100, 220MM CUT & SLOT KIT	TC1279-TKIT COMBINATION KIT	TC1279-231KIT 100, 220, 300MM CUT OUT TOOL KIT
Mitre kits	TC1279-118-07	50mm duct	YES	YES				YES	
	TC1279-MITRE	100/220/300mm duct				YES		YES	
Tool box	60X013				YES				
	60X016		YES	YES					
	60X003					YES		YES	
	60X002								YES
	TC1279-118	for 50mm	YES	YES				YES	
	TC1279-51	for 100x50mm (base only), 100/220/300mm			YES	YES		YES	
	TC1279-230	for 100x50mm (sides)						YES	
Cut out tool	TC1279-50	90mm cut					YES	YES	
	TC1279-231	150mm cut							YES
Wrench ratchet	97X01	small			YES	YES	YES	YES	
	97X02	large, 375mm handle							YES
Socket	62X001				YES	YES	YES	YES	YES
Fibre spreader	TC1279-50-3						YES	YES	YES
Grease stick	70X003		YES	YES	YES	YES	YES	YES	YES
Panel saw	100X060					YES		YES	



**Get in touch**

**MULDER-HARDENBERG B.V.**

**H.N. Werkmanweg 17  
2031 BA HAARLEM  
The Netherlands**

**Phone: +31 (0)85 800 3700  
Email: [info@m-h.biz](mailto:info@m-h.biz)**